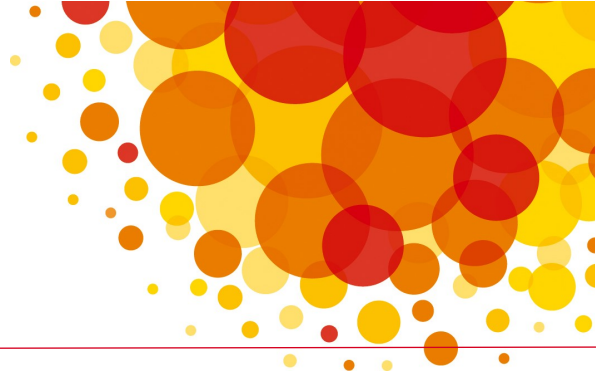




WIG

The Whitehall & Industry Group
connecting the sectors



Membership List

Private Sector

3M
Addleshaw Goddard LLP
Aggregate Industries
Airbus
Allen & Overy
Anglian Water Group
Anglo American
Arcadis
Arup
Associated British Foods
Atkins
Atos
Aviva plc
AWE plc
Babcock International Group plc
BAE Systems
Bakkavor
Barclays
BDO
BHP
Boeing
BP
British American Tobacco
Browne Jacobson
BT Group
Capita Group
Carlyle Group
CEMEX UK
CGI
Cisco
Citi
Clifford Chance
Clyde & Co
Co-operative Group
Cushman & Wakefield
Deloitte
Dentons
DHL
Direct Line Group
Drax Group
Equinor
Eversheds Sutherland
Eversholt Rail
ExxonMobil
EY
Freshfields Bruckhaus Deringer
FTI Consulting
Fujitsu Services
Gallagher
Gemserv
GlaxoSmithKline
Grant Thornton
Gowling WLG UK LLP
Heathrow Airport Holdings
Herbert Smith Freehills LLP
HSBC Holdings
Hutchison Whampoa Europe

IBM
International Airlines Group
Jacobs
John Lewis Partnership
Kingfisher
Kingsley Napley
Korn Ferry Hay Group
KPMG
Kuehne + Nagel
Leonardo
Linklaters
Lloyds Banking Group
London City Airport
LV=
Mace Group
Marks & Spencer
Maximus
Microsoft
Mizuho Bank
National Grid
Nationwide Building Society
NATS
Novartis
Nestle UK
Nissan Motor Company
Northgate Public Services
Oracle
Prudential
PwC
QinetiQ
RELX Group
Rio Tinto
Rolls-Royce
The Royal Bank of Scotland Group
Royal Mail
Sainsbury's
Santander UK
SAP UK
Savills
Serco Group
Shell International
Simmons & Simmons
Skanska
Slaughter and May
Standard Life Aberdeen plc
Sopra Steria
Tarmac
Tata
Tesco plc
Total
Unipart
UnitedHealth Group (Optum)
United Utilities plc
Virgin Care
William Hill
Womble Bond Dickinson
WSP
Xerox

Public Sector

ACAS
Bank of England
BBC
Cabinet Office
Chesterfield Royal Hospital NHS Foundation Trust
City of London
Civil Aviation Authority
Companies House
Competition and Markets Authority
Crown Prosecution Service
Croydon Council
Defra
Department for Business, Energy & Industrial Strategy
Department for Digital, Culture, Media & Sport
Department for Education
Department for Exiting the European Union
Department for International Development
Department for International Trade
Department for Transport
Department for Work and Pensions
Department of Health and Social Care
Disclosure and Barring Service
Dstl
Electoral Commission
Environment Agency
Essex County Council
Financial Conduct Authority
Financial Ombudsman Service
Financial Reporting Council
Food Standards Agency
Foreign & Commonwealth Office
Forestry Commission
GCHQ
Government Legal Department
Health & Care Professions Council
Health and Safety Executive
Highways England
HM Revenue & Customs
HM Treasury
Home Office
Homes England
House of Commons
House of Lords
Housing Ombudsman Service
The Insolvency Service
Innovate UK
Intellectual Property Office
Kent County Council
Land Registry
Leeds City Council
Legal Services Board
Liverpool City Council
Local Government Association
London Borough of Camden
London Fire Commissioner
Metropolitan Police
Ministry for Housing, Communities and Local Government
Ministry of Defence
Ministry of Justice
Money Advice Service
The National Archives
National Audit Office
National Crime Agency
Natural England
Network Rail
NHS Digital
NHS England
Northern Ireland Civil Service
Ofcom
Ofgem
Ofqual
Ofwat
Office for National Statistics
Office of Rail and Road
Ordnance Survey
Oxfordshire County Council
Pensions Regulator
Port of London Authority
Registers of Scotland
Scottish Government
The Security Industry Authority
Serious Fraud Office
Single Source Regulations Office
Southwark Council
Transport for London (GLA Group)
UK Export Finance
UK Research and Innovation
Welsh Government
Westminster City Council

Academia, Charities & Institutes

Aerospace Technology Institute
Banking Standards Board
British Council
Clarion Housing
Citizens Advice
Construction Industry Training Board
Henley Business School
Imperial College
Institute of Physics
Joseph Rowntree Foundation
King's College London
London South Bank University
National Innovation Centre for Ageing
National Trust
Notting Hill Genesis
NSPCC
Sheffield Hallam University
University College London
University of Oxford
University of Warwick
Wellcome Trust
Which?
WWF