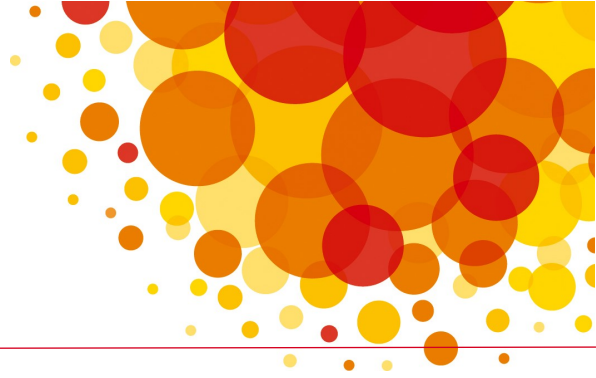




**WIG**

The Whitehall & Industry Group  
connecting the sectors



# Membership List

## Private Sector

3M  
Addleshaw Goddard LLP  
Aggregate Industries  
Airbus  
Amazon Web Services  
Anglian Water Group  
Anglo American  
Arcadis  
Arup  
Associated British Foods  
Atkins  
Atos  
Aviva plc  
AWE plc  
Babcock International Group plc  
BAE Systems  
Bakkavor  
Barclays  
BHP  
Boeing  
BP  
British American Tobacco  
Browne Jacobson  
BT Group  
Bupa  
Capita Group  
Carlyle Group  
CEMEX UK  
CGI  
Cisco  
Citi  
Clifford Chance  
Clyde & Co  
Co-operative Group  
Cushman & Wakefield  
Deloitte  
Dentons  
DHL  
Direct Line Group  
Drax Group  
Equifax  
Equinor  
Eversheds Sutherland  
Eversholt Rail  
ExxonMobil  
EY  
Freshfields Bruckhaus Deringer  
FTI Consulting  
Fujitsu Services  
Gallagher  
Gemserv  
GlaxoSmithKline  
Grant Thornton  
Gowling WLG UK LLP  
Heathrow Airport Holdings  
Herbert Smith Freehills LLP  
HSBC Holdings  
Huawei Technologies UK  
Hutchison Whampoa Europe  
Hutchison Whampoa Europe  
IBM  
International Airlines Group  
Jacobs  
John Lewis Partnership  
Kingfisher  
Kingsley Napley  
Korn Ferry  
KPMG  
Kuehne + Nagel  
Leonardo  
Linklaters  
Lloyds Banking Group  
London City Airport  
LV=  
Mace Group  
Marks & Spencer  
Maximus  
Microsoft  
Mizuho Bank  
Nationwide Building Society  
NATS  
Nestle UK  
Northgate Public Service  
Novartis  
Oracle  
PA Consulting  
Prudential  
PwC  
QinetiQ  
RELX Group  
Rio Tinto  
Rolls-Royce  
The Royal Bank of Scotland Group  
Royal Mail  
Sainsbury's  
Santander UK  
SAP UK  
Savills  
Serco Group  
Shell International  
Skanska  
Slaughter and May  
Standard Life Aberdeen plc  
Sopra Steria  
St James's Place Wealth Management  
Tarmac  
Tata  
Tesco plc  
Total  
Unipart  
United Utilities plc  
Virgin Care  
Womble Bond Dickinson  
WSP  
Xerox

## Public Sector

ACAS  
Bank of England  
BBC  
Cabinet Office  
Chesterfield Royal Hospital NHS Foundation Trust  
City of London  
Civil Aviation Authority  
Companies House  
Competition and Markets Authority  
Crown Prosecution Service  
Defra  
Department for Business, Energy & Industrial Strategy  
Department for Digital, Culture, Media & Sport  
Department for Education  
Department for Exiting the European Union  
Department for International Development  
Department for International Trade  
Department for Transport  
Department for Work and Pensions  
Department of Health and Social Care  
Disclosure and Barring Service  
Dstl  
Electoral Commission  
Environment Agency  
Essex County Council  
Financial Conduct Authority  
Financial Ombudsman Service  
Financial Reporting Council  
Food Standards Agency  
Foreign & Commonwealth Office  
GCHQ  
Guy's and St Thomas' NHS Foundation Trust  
Government Actuary's Department  
Government Legal Department  
Health and Safety Executive  
High Speed 2  
Highways England  
HM Revenue & Customs  
HM Treasury  
Home Office  
Homes England  
House of Commons  
House of Lords  
The Insolvency Service  
Innovate UK  
Intellectual Property Office  
Kent County Council  
Land Registry  
Leeds City Council  
Legal Services Board  
Local Government Association  
LocatED  
London Borough of Camden  
London Fire Commissioner  
Metropolitan Police  
Ministry for Housing, Communities and Local Government  
Ministry of Defence  
Ministry of Justice  
Money and Pensions Service  
The National Archives  
National Audit Office  
National Crime Agency  
Natural England  
Network Rail  
NHS Digital  
NHS England  
Northern Ireland Civil Service  
Ofcom  
Ofgem  
Ofqual  
Ofwat  
Office for National Statistics  
Office of Rail and Road  
Ordnance Survey  
Oxfordshire County Council  
Pensions Regulator  
Port of London Authority  
Scottish Government  
The Security Industry Authority  
Serious Fraud Office  
Single Source Regulations Office  
Southwark Council  
Transport for London (GLA Group)  
UK Export Finance  
UK Research and Innovation  
Welsh Government  
Westminster City Council

## Academia, Charities & Institutes

Aerospace Technology Institute  
Aston University  
Banking Standards Board  
British Council  
Clarion Housing  
Citizens Advice  
Construction Industry Training Board  
Henley Business School  
Imperial College  
Institute of Physics  
Joseph Rowntree Foundation  
King's College London  
London South Bank University  
National Innovation Centre for Ageing  
NSPCC  
The Open University  
Royal College of General Practitioners  
Sheffield Hallam University  
University College London  
University of Oxford  
University of Warwick  
Which?  
WWF